

EXQUISITE 43-ACRE LAND BORDERING SALINA'S
RESERVE

MLS# 417286

CI\$1,100,000

East Interior, Grand Cayman, Cayman Islands

Property Features

Location: **East Interior**
Width: **1,070**
Parcel: **3**

Status: **Current**
Depth: **2,253**
Acres: **43**

Type: **Land, Industrial (For Sale)**
Block: **62A**
Area: **70**

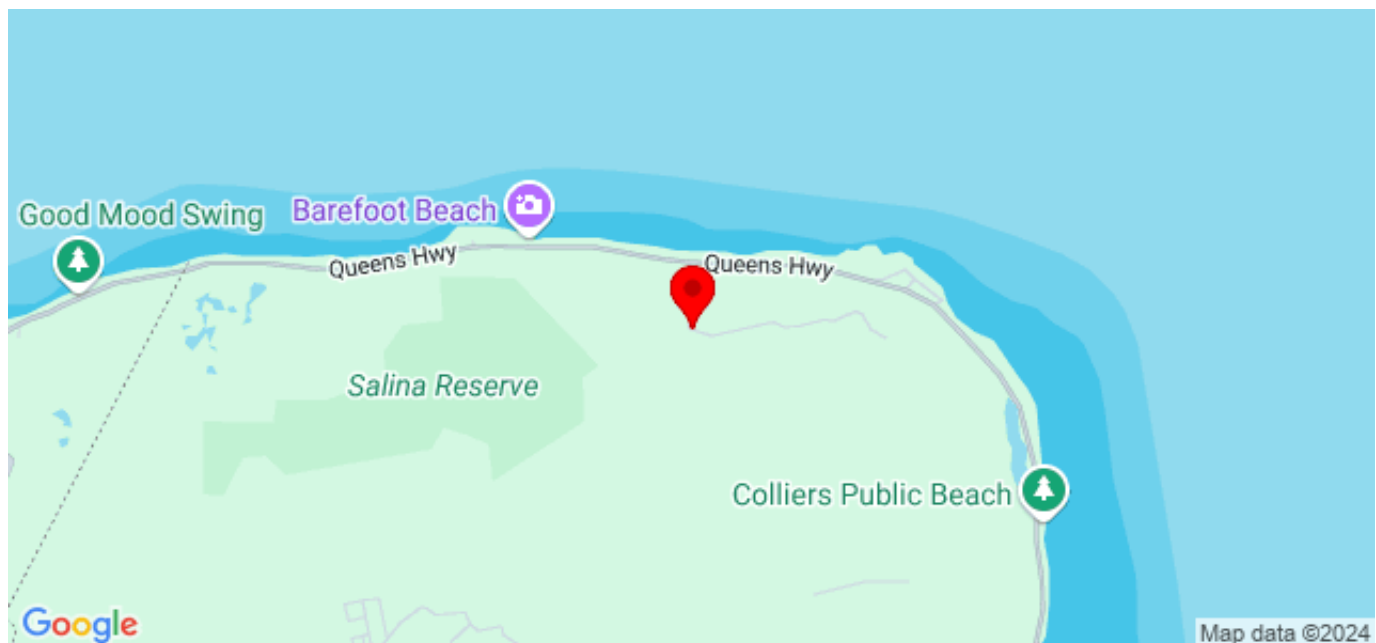
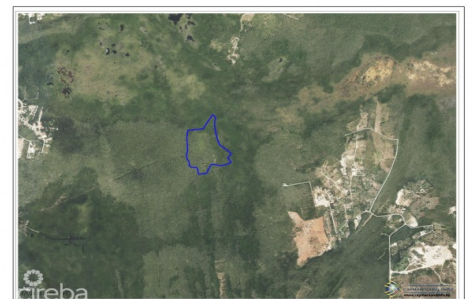
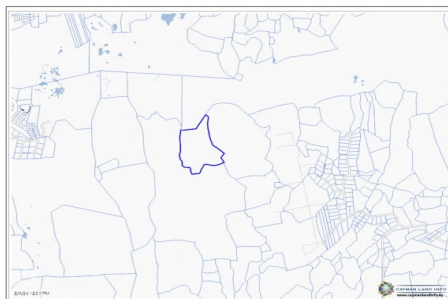
Real Estates Main Features

Zoning: **Light Industrial**
Views: **Inland**

Description

43 Acres of light industrial land at impeccable value, neighboring Salina's reserve.
Close to the projected east/west arterial extension.

Property Images





Rainbow Realty Ltd
P.O. Box 1775GT, Grand Cayman,
Cayman Islands, KY1-1109
☎ **+1 345-949-7677**
✉ info@rainbow.ky

***Disclaimer:** The information contained herein has been furnished by the owner(s) and or their nominee and represented by them to be accurate. The listing company, agent and CIREBA MLS disclaims any liability or responsibility for any inaccuracies, errors or omissions in the represented information. The listing details herein are also courtesy of CIREBA (Cayman Islands Real Estate Brokers Association) MLS and/or via LDX (Listing Data Exchange) feed. All the information contained herein is subject to errors, omissions, price changes, prior sale or withdrawal, without notice and is at all times subject to verification by the purchaser(s).