

**EAST END LAND**

**MLS# 418541**

**CI\$2,900,000**

*East Interior, Grand Cayman, Cayman Islands*

### Property Features

---

Location: **East Interior**

Status: **New**

Type: **Land, Low/ Medium/ High  
Density Residential (For Sale)**

Width: **980**

Depth: **1,586**

Block: **63A**

Parcel: **23**

Acres: **36**

Area: **75**

### Real Estates Main Features

---

Soil: **Black**

Zoning: **Agriculture/Residential**

Views: **Garden View**

### Description

---

Explore the endless potential of this expansive 36-acre parcel of pristine land, nestled in the tranquil East Interior. Perfectly positioned for development, this vast property offers a blank canvas for visionary projects such as a private estate, eco-resort, agricultural ventures, or residential subdivision.

Features:

**Prime Location:** Situated in a serene area, away from the bustle, yet within reach of essential amenities.

**Development Potential:** Ample space for large-scale projects with significant investment appeal.

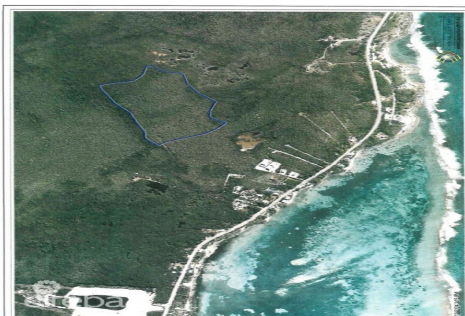
**Natural Beauty:** Lush surroundings provide an idyllic backdrop for nature-inspired developments.

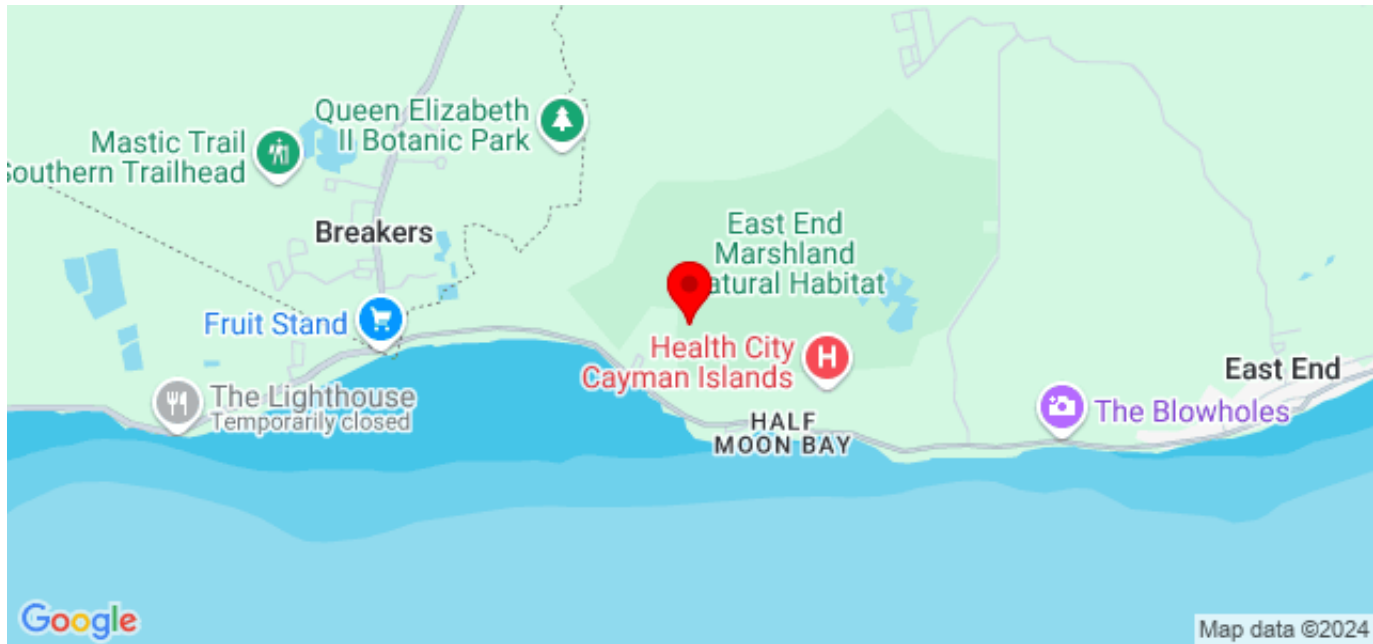
**Accessibility:** Convenient road access ensures seamless connectivity.

Whether you're an investor seeking a lucrative opportunity or a developer with big dreams, this rare property is ready to bring your vision to life.

### Property Images

---





CIREBA MLS LDX feed courtesy of ERA CAYMAN ISLANDS

**\*Disclaimer:** The information contained herein has been furnished by the owner(s) and or their nominee and represented by them to be accurate. The listing company, agent and CIREBA MLS disclaims any liability or responsibility for any inaccuracies, errors or omissions in the represented information. The listing details herein are also courtesy of CIREBA (Cayman Islands Real Estate Brokers Association) MLS and/or via LDX (Listing Data Exchange) feed. All the information contained herein is subject to errors, omissions, price changes, prior sale or withdrawal, without notice and is at all times subject to verification by the purchaser(s).