

.3360 ACRE - DUPLEX LOT - CHERRY TREE

MLS# 418825

CI\$180,000

Breakers, Grand Cayman, Cayman Islands

Property Features

Location: **Breakers**

Status: **New**

Type: **Land, Low/ Medium/ High
Density Residential (For Sale)**

Width: **108**

Depth: **162**

Block: **52B**

Parcel: **42**

Acres: **0.336**

Area: **50**

Real Estates Main Features

Soil: **Rock**

Zoning: **Low Density residential**

Views: **Garden View**

Description

Looking for the perfect investment property?

This 0.336 acre duplex lot is a golden opportunity to build and profit! Whether you're an investor, developer, or looking to build your dream home with a rental unit for extra income, this lot offers endless potential.

Ideal for a duplex - maximize rental income or live in one unit while renting out the other

Generous lot size - 0.336 acres provides ample space for a well-designed development

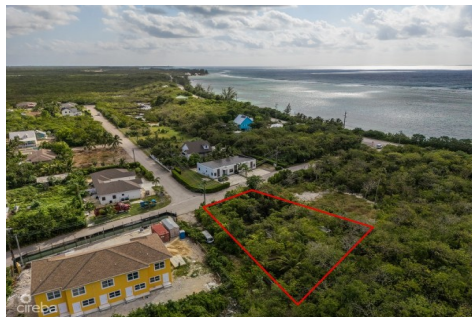
High-demand area - great potential for appreciation and long-term value

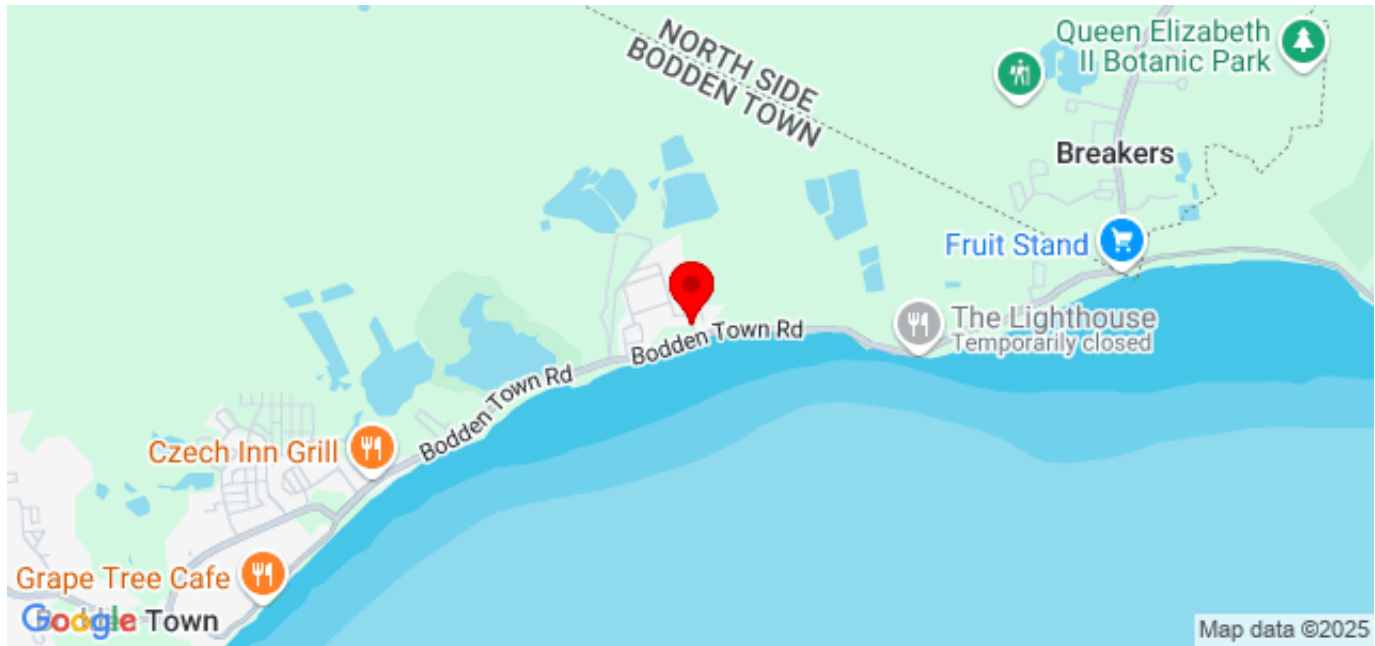
Flexible investment - build now or hold for future growth

Don't miss out on this smart investment properties like this don't last long!

Contact me today for more details.

Property Images





CIREBA MLS LDX feed courtesy of CENTURY 21 THOMPSON REALTY

***Disclaimer:** The information contained herein has been furnished by the owner(s) and or their nominee and represented by them to be accurate. The listing company, agent and CIREBA MLS disclaims any liability or responsibility for any inaccuracies, errors or omissions in the represented information. The listing details herein are also courtesy of CIREBA (Cayman Islands Real Estate Brokers Association) MLS and/or via LDX (Listing Data Exchange) feed. All the information contained herein is subject to errors, omissions, price changes, prior sale or withdrawal, without notice and is at all times subject to verification by the purchaser(s).